

Name _____ Class _____

Band 6 - English Writing
 Spelling


b

b+

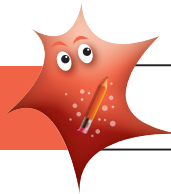
w

w+


 S

s+

- Add suffixes beginning with vowel letters to words ending in -fer e.g. referring, preferred, referee, preference.
I can add suffixes beginning with vowel letters to words ending in -fer e.g. referring, preferred, referee, preference.
- Use prefixes involving the use of a hyphen e.g. co-ordinate, re-enter.
I can use prefixes involving the use of a hyphen e.g. co-ordinate, re-enter.
- Distinguish between homophones and other words which are often confused with reference to English Appendix 1.
I can distinguish between words which sound the same but have different meanings and other words which are often confused e.g. lose/loose.
- Use dictionaries to check the spelling and meaning of words.**
I can use dictionaries to check the spelling and meaning of words.
- Spell most of the year 5 and 6 words correctly with reference to English Appendix 1.
I can spell most words correctly including words that are often misspelt.
- Use knowledge of morphology and etymology in spelling and understand that the spelling of some words needs to be learnt specifically, as with the word list in English Appendix 1.
I can use knowledge of root words, prefixes and suffixes in spelling and understand that the spelling of some words needs to be learnt specifically.
- Use a thesaurus with confidence.
I can use a thesaurus with confidence.

Band 6 - English Writing
 Handwriting


b

b+

w

w+


 S

s+

- Write legibly, fluently and with increasing speed by choosing which shape of a letter to use when given choices and deciding whether or not to join specific letters.
I can write legibly, fluently and with increasing speed by choosing which shape of a letter to use when given choices and deciding whether or not to join specific letters.
- Write legibly, fluently and with increasing speed by choosing the writing implement that is best suited for a task.
I can write legibly, fluently and with increasing speed by choosing the writing implement that is best suited for a task.